

Lexington School

Establishing an Architectural
Character

Basic Elements of Architectural Design

1 Provide comfort and shelter

Basic Elements of Architectural Design

- 1 Provide comfort and shelter
- 2 Constructible, durable and maintainable

Basic Elements of Architectural Design

- 1 Provide comfort and shelter
- 2 Constructible, durable and maintainable
- 3 **Meet the budget**

Basic Elements of Architectural Design

- 1 Provide comfort and shelter
- 2 Constructible, durable and maintainable
- 3 Meet the budget
- 4 Appropriately scaled to the intended purpose

Basic Elements of Architectural Design

- 1 Provide comfort and shelter
- 2 Constructible, durable and maintainable
- 3 Meet the budget
- 4 Appropriately scaled to the intended purpose
- 5 Utilize current design and construction technology

Basic Elements of Architectural Design

- 1 Provide comfort and shelter
- 2 Constructible, durable and maintainable
- 3 Meet the budget
- 4 Appropriately scaled to the intended purpose
- 5 Utilize current design and construction technology
- 6 Respond to and support the program functions

Basic Elements of Architectural Design

- 1 Provide comfort and shelter
- 2 Constructible, durable and maintainable
- 3 Meet the budget
- 4 Appropriately scaled to the intended purpose
- 5 Utilize current design and construction technology
- 6 Respond to and support the program functions
- 7 Respond to the site and environmental conditions

Basic Elements of Architectural Design

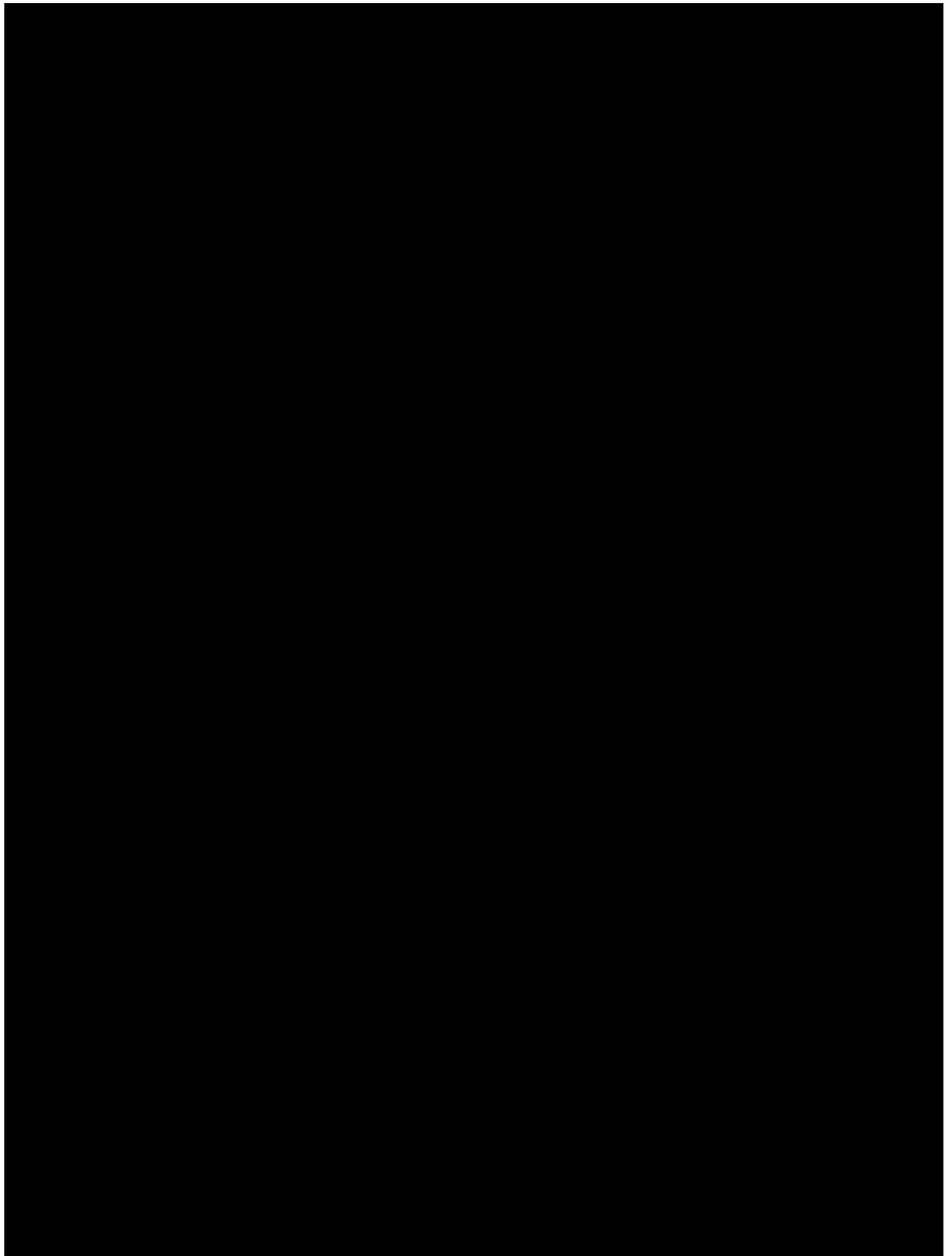
- 1 Provide comfort and shelter
- 2 Constructible, durable and maintainable
- 3 Meet the budget
- 4 Appropriately scaled to the intended purpose
- 5 Utilize current design and construction technology
- 6 Respond to and support the program functions
- 7 Respond to the site and environmental conditions
- 8 **Evolve organically**

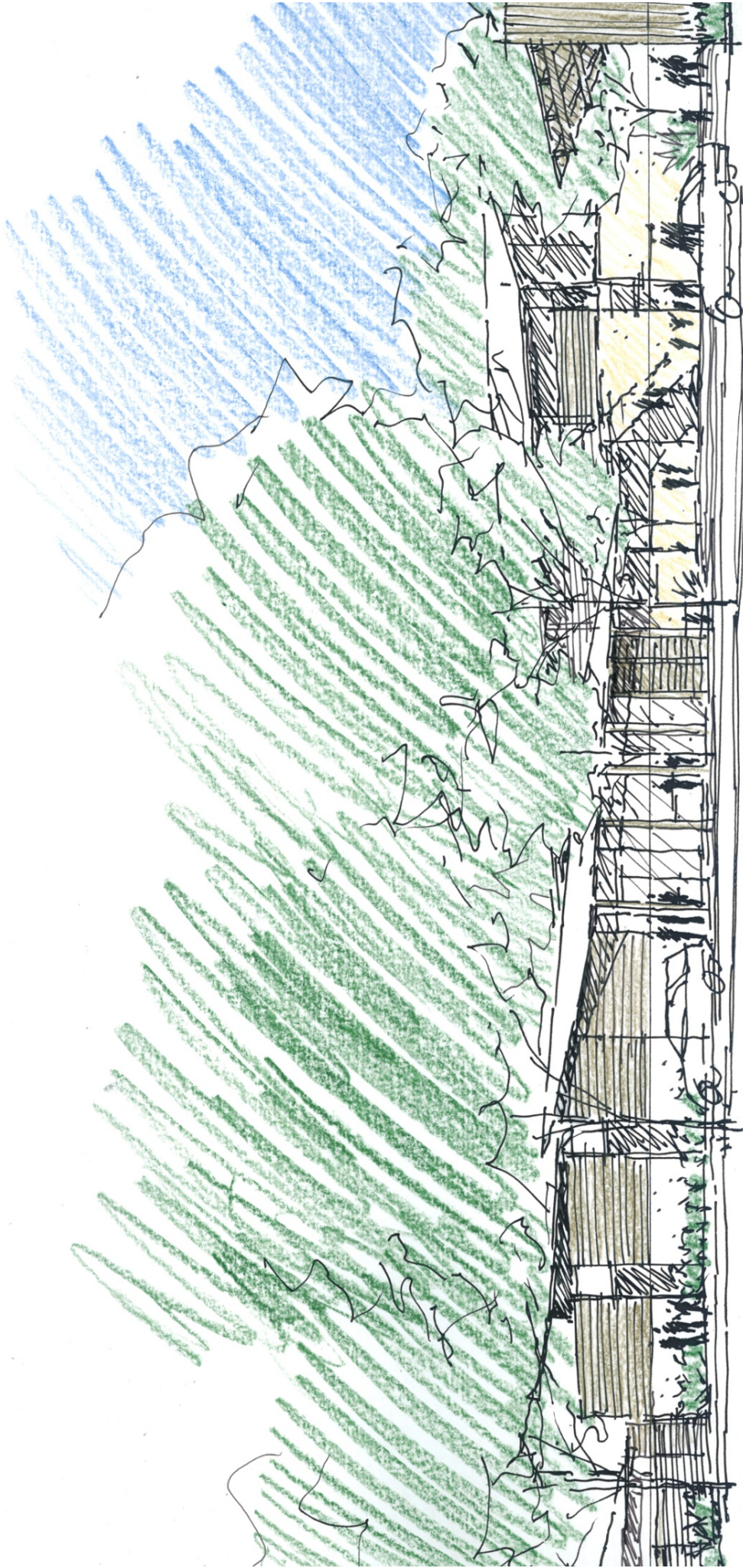
Basic Elements of Architectural Design

- 1 Provide comfort and shelter
- 2 Constructible, durable and maintainable
- 3 Meet the budget
- 4 Appropriately scaled to the intended purpose
- 5 Utilize current design and construction technology
- 6 Respond to and support the program functions
- 7 Respond to the site and environmental conditions
- 8 Evolve organically
- 9 Colors in harmony with the site

Basic Elements of Architectural Design

- 1 Provide comfort and shelter
- 2 Constructible, durable and maintainable
- 3 Meet the budget
- 4 Appropriately scaled to the intended purpose
- 5 Utilize current design and construction technology
- 6 Respond to and support the program functions
- 7 Respond to the site and environmental conditions
- 8 Evolve organically
- 9 Colors in harmony with the site
- 10 Source of pride for the community



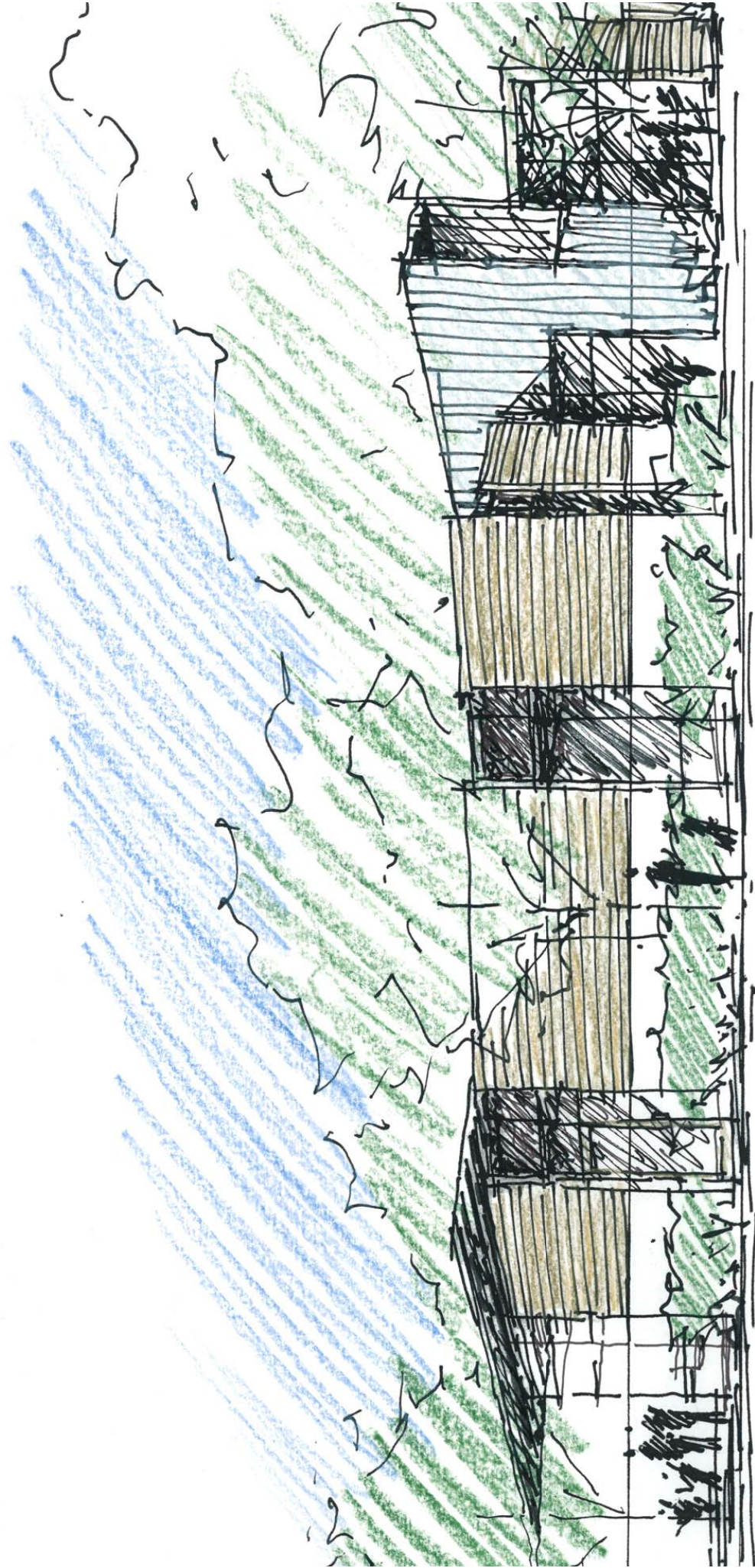


Plaza from Parking Area

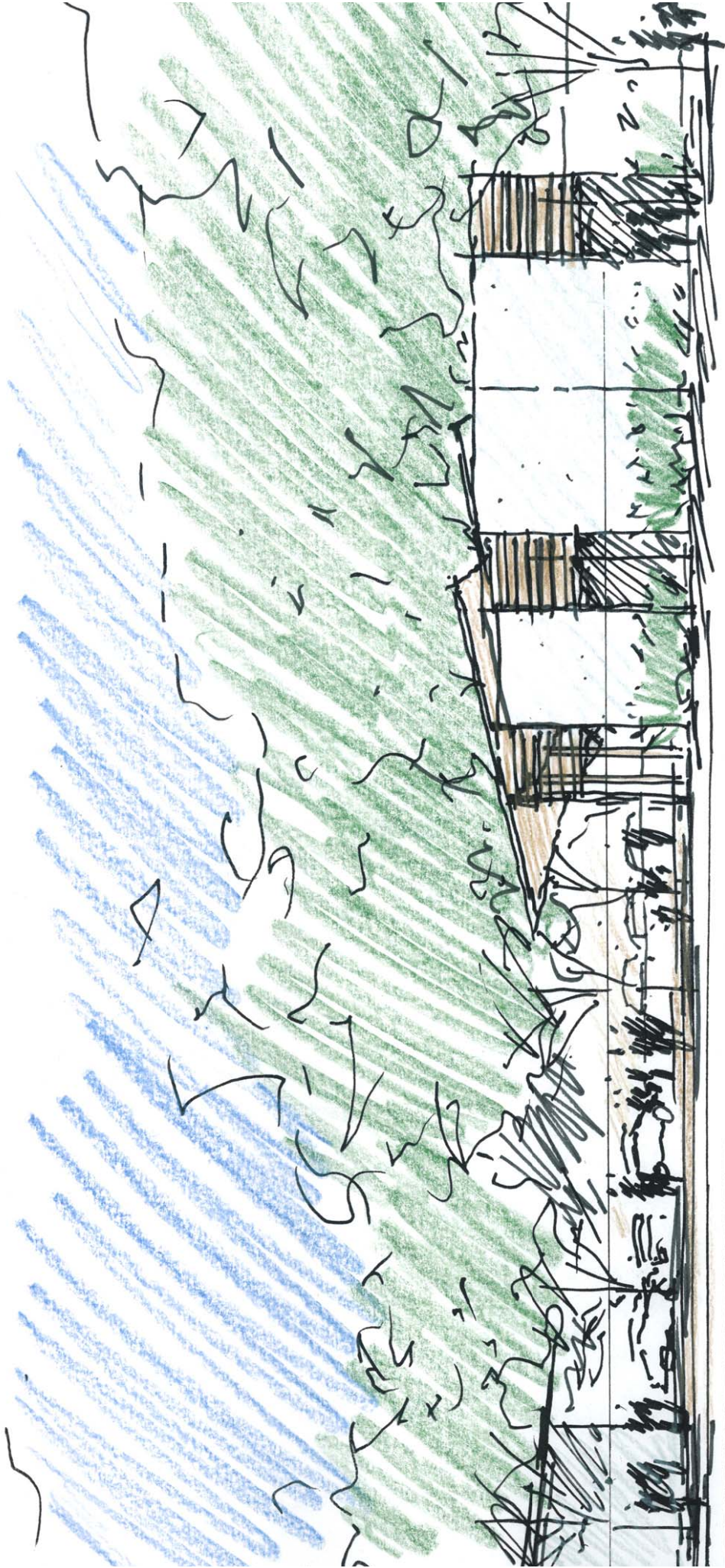




Multi and Admin from Playground



Admin from Classrooms



Admin and Plaza from Playground